



Fall/Winter 2024-25

UPPER MT. BETHEL *Township*



Photo courtesy of Desiree Hoke

Northampton County, Pennsylvania

INSIDE THIS ISSUE

Message from the Manager.....	3	What is the Plane doing and how does it relate to healthier soil and clear water?	10
Upper Mount Bethel Township Road Crew.....	3	UMBT Field Hockey	11
Message from the Chairman	4	UMBT Community Identity.....	12
Outdoor Lighting Problem.....	4	Hardball Cider	12
Interesting Facts about Upper Mount Bethel Township.....	5	Parks and Recreation.....	13
Bangor Slater Band Bingo & Tricky Tray	5	12 Simple Steps to Get Ready for Emergencies in PA.....	15
News from the Open Space Advisory Board.....	8	2024 UMBT Tax Office House.....	15
Keller Zoning and Inspection Services Inc.....	9	UMBT Contact Information.....	17

Visit our website at www.umbt.org

610-314-1210

Call Us for All of Your HVAC Needs!

We Now Offer Electrical Services!



We Install, Repair & Service:

- Ductless Systems
- Oil Furnaces
- Heat Pumps
- Gas Furnaces
- A/C Only Systems
- Boilers

\$250 OFF HVAC System Installation

Cannot be combined. Limited time offer.

cjsheatingandcooling.com

Lic # PA141966

Beautiful riverside location.



DRIFTSTONE
CAMPGROUND



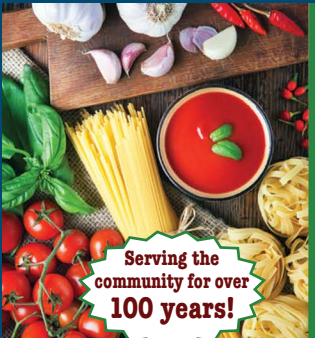
Fishing • Canoeing • Kayaking

888.355.6859

2755 River Road • Mt. Bethel, PA 18343

www.driftstone.com

Located 4 miles south of the Portland, PA to Columbia, NJ Bridge on River Road



Serving the community for over **100 years!**

Ruggiero's Market

88 Dante St. • Roseto, PA 18013

P: 610-588-2681 • F: 610-599-2881

www.ruggierosmarket.com

Mon-Fri: 8a-7p • Sat: 8a-4p • Sun: Closed

Homemade Sausage

Fresh Cut Meats

Italian Specialties

Imported Italian Pottery

General Merchandise

PROGRESSIVE

TRAVELERS



ERIE
INSURANCE
GROUP



SABATINO
INSURANCE AGENCY

- Auto ■ Home ■
- Business ■ Life ■

Serving the Community Since 1950

17 S. Robinson Ave., Pen Argyl, PA

610-863-6033

www.sabatinoagency.com

"INSTANT ON-LINE QUOTES"



SCAN THIS CODE FROM YOUR SMARTPHONE FOR OUR MOBILE APP!

BROAD EXCAVATING

Bangor PA

610-588-6941

FREE ESTIMATES



Dave's Cell
610-509-9736

PA CONTRACTOR #PA036341

NO JOB TOO SMALL

- SEPTIC SYSTEMS
- PERC TEST
- LOT CLEARING
- TRENCHING
- DRAINAGE
- RETAINING WALLS
- DRIVEWAYS
- SIDEWALKS
- UTILITY WORK
- CURBING
- SEWER LINES
- WATER LINES
- DEMOLITION
- REMOVAL
- STUMP REMOVAL
- CHIPPING

TRUCKING

- STONE,
- SAND
- FILL DIRT
- MULCH
- TOP SOIL
- SNOW PLOWING

Message from the Manager

Hi Everyone,

I want to follow up on two projects we discussed in the Spring/Summer issue of our biannual newsletter. First, our bathroom project was completed on time with a ribbon cutting ceremony in the last week of June, just in time for our fireworks for July 4th. I want to thank the Post Foundation for their generous \$100,000.00 donation and the Northampton County Grant of \$60,000.00 presented by Frank Brooks. Also, I want to thank Troy Mechanical for getting the job done on time and of course our road crew led by Lin Manzi who completed the septic system which saved our residents over \$100,000.00. It was a complete team effort and a project that will be used for many years to come at our beautiful park. Second, I want to update everyone on our Preserve project. Last we spoke, Simone Collins submitted several grants to pay for the project. I am happy to announce we have been awarded one of these grants from the National Fish and Wildlife Foundation (NFWF) this past August for \$600,000.00. I'm optimistic, in our next newsletter I will have more good news to report about grant awards.

As summer has come to an end, we have finished our road paving projects for the year. Thank you to all the residents who made it a point to praise our road crew on a job well done. The crew appreciates all your positive feedback, and we are very proud of the work they do for us to keep the roads safe for our residents. Now we are moving into Autumn, we will be hard at work getting our equipment ready for the upcoming Winter season.

We will be moving into the development of our budget for next year. After speaking with our BOS and our auditors, we are comfortable stating that we will not have a tax increase for next year. Also, I want to let you all know as soon as the reorganization is completed in January of the new year, we will start negotiations for a new contract for our trash removal with Waste Management and possibly rebidding a new contract. We have heard all the complaints about cost, size of the totes, etc. This BOS is determined to get the best contract possible for us all. Once we begin the fact-finding phase, we will keep everyone abreast of our progress.

Finally, I never want to miss an opportunity to thank our staff for the outstanding job they all do day in and day out for our township. We are truly blessed with such a great team. Also, our volunteers, who are members of all our advisory boards, take time away from their families to serve this town to help us be successful. A big thank you to all of you!

Hope everyone has a happy and healthy holiday season!

All the Best,

Nick

Nick Graziano

Upper Mount Bethel Township Manager

Upper Mount Bethel Township Road Crew



Message from the Chairman

Hello Upper Mount Bethel:

The spring/summer of 2024 was a good one for Upper Mount Bethel. Our Township, through a few initiatives, raised over \$50,000 for various causes, where many volunteered their time, donated items and/or gave financial contributions. When I ask those residents who want to give back, why they do it, I get similar answers. Basically, their answers have something to do with wanting to help others, making our Township the best it can be, and a place where people can be proud to live.

The Township had two free electronic recycling events this summer, collecting donations that collectively raised about \$20,000 for a local family and for a national charity. We did a clean-up day with our neighboring municipalities as part of the Slate Belt Annual Clean Up Day. Upper Mount Bethel was able to raise over \$6,000, some donated furniture and a lot of food for a life-long couple here in town, who lost their home in a fire.

The Supervisors held a free drop off garbage day on a Saturday where residents could come by to get rid of their excess residential garbage. There has been one Community Wide Yard Sale that had over 20 homes participating and our next one, which is the weekend of September 27th, 28th, and 29th has over 27 homes currently signed up. On September 11th we did our annual memorial to the victims of 9/11/2001, where volunteers said prayers, sang, donated a wreath, spoke and played music.

To top things off, we obtained restrooms at the Upper Mount Bethel Community Park which was in lieu of a \$100,000 donation from the Post Foundation.

These are just some examples in the past six months where the People of Upper Mount Bethel came together to volunteer their time, gave donations, or helped out to keep Upper Mount Bethel moving forward. We even have more free events coming up before the year end, so please keep an eye out for them.

Additionally, all our Upper Mount Bethel committees and boards are made up of volunteers, from the Park and Rec Board who put on fun events at our Community Park to the Economic Development Committee, who advance local business interests in town. The Open Space Advisory Board and the Environmental Advisory Committee promote our rural scenery and advocate for a safe, healthy environment.

Oh, and by the way, the Mount Bethel Fire Company and the North Bangor Fire Company are made up of all volunteers! How amazing with all the People living here, we have so many who want to protect and take care of Upper Mount Bethel!

These are one of the many reasons why I am privileged to be a resident and love raising my family here. It is this wonderful sense of community where we live and the People's willingness to help others, that my family loves to call home. I hope you are proud of living in Upper Mount Bethel. These are just a few reasons you can be.

Very Truly Yours,

John A. Bermingham

John A. Bermingham
Chairman, Board of Supervisors
Upper Mount Bethel Township


Outdoor Lighting Problem

If you notice a streetlight or outdoor area light is out, please contact Met Ed directly at 1-888-LIGHTSS (888-544-4877) or visit the FirstEnergy Corp. website. Please have the address and/or intersection of the pole and the pole number. Thank you for helping to keep our community safe.

https://www.firstenergycorp.com/outages_help/report-lighting-problem.html



Interesting Facts about Upper Mount Bethel Township by Diane Friedman

1. Old Mount Bethel was founded by the Ulster Scots in 1730.
 2. It included the Old Hunter Settlement named after Alexander Hunter and the Martin Settlement named after James Martin. These settlements were between the present-day Martin's Creek and Richmond.
 3. Many interesting items from these early days can be found at the Hunter-Martin Settlement Museum at 2966 Church Road, Bangor. Here you can also find the graves of many participants in the Revolutionary War. See their website for visiting hours.
 4. Old Mount Bethel was one of the oldest settled regions in what is now Northampton County. The Native American tribe, the Lenni Lenape, gave up the land in the 1737 Walking Purchase.
 5. In 1746 the citizens of this settlement petitioned for Township status, and Mount Bethel Township was established. It included what is now Upper Mount Bethel, Lower Mount Bethel, and Washington Townships.
 6. Mount Bethel was considered a part of Bucks County until the county was divided, and Northampton County was established in 1752.
 7. In the mid-18th century many people from Germany came to this area. There were conflicts between them and the Scotch-Irish. Therefore, many of the Scotch-Irish people moved west, and the Germans remained.
- 
8. In 1787 Old Mount Bethel was divided into two parts: Upper Mount Bethel Township and Lower Mount Bethel Township. Present-day Washington Township was a part of Lower Mount Bethel.
 9. In the 1700's the village of Mount Bethel was named Williamsburg and Stone Church was called Centreville. Maps of these places from the 1800's can be found at: https://www.old-maps.com/z_bigcomm_img/pa/town/NorthamptonCo/1860/UpperMtBethel_Williamsburg_1860_7x7_web.jpg
 10. In 1823 the Mount Bethel Presbyterian Church bought land in Williamsburg (Mount Bethel) on which to build their new church building. In 1836 their church was erected on 2+ acres of land which cost them \$265. This church is presently occupied by the Slate Belt Museum which houses many artifacts and memorabilia from the Slate Belt area. Anyone interested in seeing these items can visit on Sundays from 1:00 – 4:00 pm from May until November.
 11. According to the U.S. Census Bureau, Upper Mount Bethel Township has a total area of 44.3 square miles. This makes it one of the largest townships in the state of Pennsylvania.
 12. This township is considered a second-class township because of its population density. A township is considered a first-class township if its population is over 300 people/square mile. Upper Mount Bethel has a population of 6,439. (2020 census)
 13. Upper Mount Bethel has over 100 miles of roads that it must maintain. The state of Pennsylvania (PennDot) maintains the rest: just a little over 20 miles of highways.



**BANGOR SLATER BAND
BINGO & TRICKY TRAY**

Sunday December 8, 2024

Hosted by the Portland Fire Co.
At The William Pensyl Social Hall 111 State St., Portland, PA 18351
Doors open @ 11:00 am Bingo Starts @ 1:00 pm

**20 games of Bingo, Special Raffles,
Tricky Tray, 50/50 Raffle, and Door Prizes**

SAVE THE DATE!!!

Our 11th Annual Bingo and Tricky Tray event! Featuring prizes from Thirty-One, Coach, Vera Bradley, Michael Kors, Pampered Chef, Tupperware & More! 20 games of bingo, many tricky tray prizes, large raffles, door prizes and 50/50.

Doors open at 11am, calling begins at 1pm

\$25 Advance Ticket Purchase includes:

Admission, Early Bird Raffle Ticket*,
1 Bingo Book for 20 Games, &
1 sheet of Tricky Tray Tickets.

*****TICKETS WILL GO ON SALE OCTOBER 1, 2024*****

Additional books and tickets available to purchase at event.

Lunch and refreshments will be available for purchase.

Questions? Call or Text Missy 484-866-6830

*****Limited seating, this event has sold out and we have had to turn people away at the door in the past. No children due to capacity restrictions. All entrants must pay admission. Only individuals 16 and over will be permitted*****

*Early Bird raffle tickets with pre-order only

Admission at the door is \$25 and includes a bingo book of 20 games only

REALTY EXECUTIVES



Frank Comunale Jr.
REALTOR®

For All Your Real Estate Needs

31 West First Street
Wind Gap, PA 18901

Office: 610-863-8444

Direct: 610-392-0903

Fax: 610-863-1040

FComunaleJr.Realtor@gmail.com



INSURIBLY™ FAMILY OF AGENCIES
INSURANCE SIMPLIFIED

*Auto | Homeowners | Life | Business
Insurance Coverage for your Business & Employees*

**1566 S Delaware Drive
Mt. Bethel, PA 18343
570-867-9696**



Gaffney Parsons Family Funeral Homes

Continuing the Tradition of Excellence

gaffneyparsons.com

**James B. Gaffney
Funeral Home**

Curtis L. Parsons, Supervisor

610-863-6152

200 South Robinson Avenue, Pen Argyl, PA 18072

**Gaffney Parsons Funeral Home
& Cremation Services, Inc.**

Kelly Gaffney Parsons, Supervisor

610-588-2128

4 Lillian Lane (Village of Johnsonville), Bangor, PA 18013

**Gaffney Parsons Funeral Home
& Cremation Services, Inc.**

Tyler D. Minnich, Supervisor

610-588-4522

314 South First Street, Bangor, PA 18013

TRADITIONAL, MEMORIAL, CREMATION AND PRENEED SERVICES



Support our members; they support our community.

www.slatebeltchamber.org

Proudly Serving Upper Mount Bethel Township Since 2017



OUR SERVICES INCLUDE:

WATER FACILITIES ENGINEERING | WASTEWATER ENGINEERING
MUNICIPAL ENGINEERING | STRUCTURAL ENGINEERING
TRAFFIC & TRANSPORTATION ENGINEERING
SURVEYING | ENVIRONMENTAL ENGINEERING
PLANNING & SITE DESIGN
CONSTRUCTION PHASE SERVICES | GEOGRAPHIC INFORMATION SYSTEM
DRONE SERVICES | GRANT SERVICES

Corporate Office: 949 Easton Road, Warrington, PA 18976 | 215.343.5700
433 Lancaster Avenue, Suite 200, Malvern, PA 19355 | 610.489.5100
630 Freedom Business Center, Third Floor, King of Prussia, PA 19406 | 610.572.7093
105 Raider Boulevard, Suite 206, Hillsborough, NJ 08844 | 908.874.7500
101 Larry Holmes Drive, Suite 201, Easton, PA 18042 | 610-989-4940



Keller Zoning & Inspection Services

- Certified Third Party Agency
- Municipal zoning - code inspections.
- UCC reviews and inspections.

610.759.8227

tina.kellerzoning@rcn.com

www.kellerzoninginspectionservice.com

115 S.. Broad St | Nazareth, PA 18064



BUY YOUR GIFT NOW!

20% OFF GIFT CARDS

**Available at all locations
starting Black Friday 11/29!**

See attendant to purchase, or purchase online for mailed cards!

SPARKLECARWASH.COM • OPEN DAILY: 7 AM TO 8 PM

3808 Easton-Nazareth Hwy.
Easton • 484.626.1513
Behind Wawa

1070 Congdon Ave.
Stroudsburg • 570.424.9687
Behind Weis

3188 PA-940
Mount Pocono • 570.355.5015
Behind Wawa

MT. BETHEL PLAZA

Where Rt. 512 meets Rt. 611 in the Heart of Mt. Bethel

Stay Local with Your Friendly Neighborhood Center!

Healthy Living

- Mt. Bethel Eye Care - Dr. Stephen DiMarco
- Lehigh Valley Health Network - Dr. Jon Raso
- Duddy Chiropractor - Drs. Scott and Jared
- Method Karate and Fitness - Ninja Trix
- Comunale Chiropractic - Dr. Dan Comunale
- HNL Lab Medicine Full Service Lab

Food & Beverage

- Mt. Bethel Beverage **Slushies To Go**
ATM on site
- Mt. Bethel Pizza
- Panda Chinese Restaurant
- Convenient Parking

Retail & Services

- True Value Hardware Store
- Mt. Bethel Auto Parts
- Mt. Bethel Pharmacy
- US Post Office
- Todas Designs and Graphics
- Dylaggio Music Store **Barber Shop**
- Paul's Precision Cuts
- Tigris Aquatic Services

WE APPRECIATE YOUR BUSINESS!

Mary Jo Krafty
Sam Krafty

Slushies



Cold Beer • Soda • Lottery • Ice • Tobacco • Snacks
Featuring Area's Largest Selection of Craft Beers
We Sell Singles, 6 Packs, Cases and Kegs!



Like Us on Facebook
3 Mt. Bethel Plaza
Mt. Bethel, PA 18343

Open 7 Days

570-897-BEER

www.mt-bethel-beverage.com

Michael Krafty

Cold Craft Beer



**COMUNALE
CHIROPRACTIC**

Dr. Daniel L. Comunale, D.C.

Telephone: 570-234-0995

14 Mount Bethel Plaza | Mount Bethel, PA 18343

News from the Open Space Advisory Board

Sign, sign, everywhere a sign. Did you read the sign?

Members of the Open Space Advisory Board along with other members of the community served on the Portland to Lake Minsi Trail Feasibility Committee. The feasibility study was funded through grant monies awarded by Northampton County and the Pennsylvania Department of Conservation and Natural Resources. The concept of the trail is to connect Portland to Lake Minsi going through the Preserve on Million Dollar Highway. This trail is a small portion of the Northern Tier Trail, which is planned to join the northern end of the county from Portland to Walnutport. Simone Collins Landscape Architecture explored various options for the trails for this exciting project and completed the feasibility study in August.

If you are interested in learning more about conservation easements, the Preserve, or the Portland to Minsi Trail, please feel free to attend the Open Space Advisory Board meetings held on the fourth Wednesday of the month at 7:00 pm at the township building. All are welcome to attend!

Respectfully submitted,
Laura Bocko
Laura Bocko, Chair
Open Space Advisory Board

In various parts of the township, you will find signs like this one. The signs are on properties preserved by Heritage Conservancy. Be on the lookout for more signs in the coming months.



Exciting News from the Open Space Advisory Board!

The National Fish and Wildlife Foundation has awarded Upper Mount Bethel Township a grant of \$600,000 for the Preserve! A brief description of the grant and scope of work of the project at the Preserve is found below.



Improving Habitat and Recreation Access In the Upper Mount Bethel Preserve (PA)

Grantee: Upper Mount Bethel Township

Grant Amount.	\$600,000
Matching Funds.....	\$600,000
Total Project Amount:.....	\$1,200,000

Restore and enhance the Upper Mount Bethel Preserve to create a resilient ecosystem for wildlife and improve public access for recreationists. Project will result in several habitat and public access improvements on the preserve, including buffer plantings, the establishment of meadows, reforestation, aquatic habitat restoration and the creation of ADA-accessible trails.

For a complete list of NFWF grants, go to [nfwf-dwcf-20240819-gs.pdf](#).

Portland to Minsi Lake Trail Feasibility Study

Upper Mount Bethel Preserve Master Plan

Scan to access the full reports!

Or visit: www.uppermountbethelpreserve.org/

THANK YOU!

This publication is produced at no cost to Upper Mount Bethel Township residents thanks to the generous sponsorship of the businesses listed throughout the newsletter. The Township recognizes these businesses as community supporters and encourages residents to also support these local businesses with their patronage.

Keller Zoning and Inspection Services, Inc.

UCC/Zoning Code Enforcement, 115 S. Broad St., Nazareth, PA 18064, Phone: 610-759-8227, Fax: 610-365-2954

What Type of Permit(s) Do I need?

The following information is a brief overview. If you are uncertain, always contact the Building Code Official (BCO) and the Zoning Officer to confirm permitting requirements prior to proceeding with your project.

The following guidelines apply to single-family dwellings, two-family dwellings, townhouses and structures that are considered to be accessory to these types of residential structures. Any other uses or proposed construction would be considered "COMMERCIAL" and must comply with the requirements for commercial buildings. Please contact the Building Code Official (BCO) and Zoning Officer for more information on how to determine the requirements for any proposed commercial construction.

Required Residential Permits	ZP: Zoning Permit	BP: Building Permit
<p>1. Decks</p> <p>a. 30" or less at the highest point of the deck walking surface measured from the adjacent grade, not located at the main exit door and without a roof: ZP</p> <p>b. Over 30" at the highest point of the deck walking surface measured from the adjacent grade or if the deck is located at the main exit door: ZP and BP</p> <p>c. Replacing an existing deck requires permits as specified in a. and b.</p> <p>2. Porches or Decks with a roof</p> <p>a. ZP and BP regardless of the height of the walking surface</p> <p>3. Enclosing a Porch or Patio</p> <p>a. ZP and BP</p> <p>4. Sheds or Garages</p> <p>a. Under 1,000 square feet of total floor area and accessory to a single family dwelling: ZP</p> <p>b. 1,000 square feet of total floor area or larger: ZP and BP</p> <p>5. Fences</p> <p>a. Fences 3 feet to 6 feet high: ZP</p> <p>b. Fences higher than 6 feet: ZP and BP</p> <p>6. Retaining Walls</p> <p>a. Up to and including 4 feet high measured from the adjacent grade: ZP</p> <p>b. Retaining walls higher than 4' at any point measured from the adjacent grade: ZP and BP</p> <p>7. Swimming Pools</p> <p>a. All swimming pools that are capable of holding 24" or more of water: ZP and BP <i>Barriers (e.g. fence) required by the International Residential Code must be provided.</i></p> <p>8. Hot tub or Spa</p> <p>a. Indoor: BP</p> <p>b. Outdoor: ZP and BP</p> <p>9. Additions</p> <p>a. Any size: ZP and BP</p> <p>b. Garage attached to the house: ZP and BP</p> <p>c. Carport attached to the house: ZP and BP</p> <p>10. Alterations</p> <p>a. Alterations that involve structural changes: BP <i>A zoning permit may be required, depending upon the scope of work. Please do not proceed with a project of this type without first contacting the code official for guidance.</i></p>	<p>11. Changes to an Existing Mean of Egress</p> <p>a. Removal or change: BP <i>A zoning permit may be required depending upon the scope of work.</i></p> <p>b. Ramp: ZP and BP</p> <p>c. Exit door: BP</p> <p>d. Stairs: ZP and BP</p> <p>e. Handrails: BP</p> <p>f. Guard system: BP</p> <p>12. New Homes</p> <p>a. Traditional: ZP and BP</p> <p>b. Manufactured (new or used): ZP and BP</p> <p>c. Modular (new or used): ZP and BP</p> <p>13. Demolition</p> <p>a. Residential Structure: BP</p> <p>b. Commercial Structure: BP</p> <p>14. The Project Involves:</p> <p>a. Removal, replacement, re-enforcement or cutting of any structural beam or header or any load-bearing support wall: BP</p> <p>b. Work or service to the electrical service to the dwelling that will require an inspection by the power company and UCC inspection. Commercial Electrical Service requires BP and Inspection.</p> <p>c. Cutting away of any wall, partition, or portion thereof: BP</p> <p>d. Addition to, alteration of, replacement or relocation of any water supply, sewer, drainage, gas, soil, waste, vent or similar piping: BP</p> <p>e. Addition to, alteration of, replacement or relocation of any electrical wiring: BP</p> <p>f. Addition to, alteration of, replacement or relocation of any mechanical Equipment: BP</p> <p>15. Any portion of a dwelling or residential accessory structure that will be used for commercial purposes (open to employees or the public) Examples include but are not limited to:</p> <p>a. Professional offices</p> <p>b. Business offices</p> <p>c. Notaries</p> <p>d. Beauty Shops, nail salons, barber shops</p> <p>e. Car or equipment repair</p>	

FEES: A \$135.00 application fee is due with all residential Zoning Permit applications. Any additional zoning fees are due upon issuance of the permit. The building permit fees are separate from the zoning fees and are due upon issuance of the permit. Checks should be made Payable to Upper Mount Bethel.

Any construction that requires a building permit also requires a grading plan review by the Township Engineer.

Please keep in mind that doing work regulated by the Uniform Construction Code (UCC) without a permit will result in an enforcement action being taken against you by the municipality, and upon conviction, you may be subject to fines and penalties up to and including \$1,000 per day of each violation. Also, occupying any structure without a Certificate of Occupancy issued by the BCO is a serious violation and will also result in enforcement action. Please do not occupy or begin using any structure without a Certificate of Occupancy.

If you fail to obtain permits, inspections and certificates of occupancy, it is very likely that you will have serious difficulties when you eventually try to sell your house or property, as all structures built since April 9, 2004 must have a legal certificate of occupancy .

What is this Plane doing and how does it relate to healthier soil and clean water?



Picture from Emily Daniel : Ag Pilot

The plane that is applying cover crops, will apply seed otop of existing growing Corn and Soybean fields. By applying the cover crop in Mid-August through September while the Corn and Soybean crop is still growing in the fields, allows the cover crop to germinate and grow under the canopy of the Corn and Soybeans, giving the cover a longer chance to establish before the colder fall and winter months ahead. When the Corn and Soybeans are harvested in the fall, the newly established cover crops will remain in the field throughout the Winter and Spring. The cover crops will do their job to provide additional Nitrogen to the soil, to protect the soil from erosion, to build organic matter, and to suppress weeds during that time period; before being terminated in the Spring right before the next season of Corn and Soybean planting.

There are other methods of applying cover crops, such as with a tractor and a grain drill or spreader, but with those methods, you must wait till the Corn and Soybean crop is off the field beforehand. This is usually later in the season and can lead to a less successful rate of good root development of the cover crop.



Established mixed cover crop applied by plane in an established Corn field

So what is this plane doing swooping around our neighboring properties? The answer is applying cover crops. Mid-August through September you can find them soaring high and swooping low to provide an important agricultural service.

Cover crops are plants that are grown to cover soil rather than for harvest. Some of the common ones used around here are cereal rye, crimson clover, and radishes; but there are more. They can help improve soil quality, manage erosion, and control weeds. Cover crops, such as clover, can also be used to fix Nitrogen from the atmosphere and return them to the soil. Cereal Rye promotes quick, dense coverage to help manage soil erosion from heavy rainfall.



Tractor with Grain drill, drilling seed in soil



Tractor with spreader broadcasting seed

So next time you see the plane flying around, don't be alarmed. While it can be annoying, it usually does not last longer than a week in the Township. No Pesticides, Herbicides or Fertilizer are being applied during the aerial applications. The experienced pilots are actually doing good by getting the cover crops planted earlier, and helping protect our topsoil which keeps our waterways clean.

By Dohl DiFebo (farmer/resident)
UMBT EAC Board Member



UMBT Field Hockey

The 2024 UMBT Field Hockey Season is underway. Breaking our record, 90 girls registered this fall, ranging from Kindergarten to 6th Grade. With 9 Teams & 26 Volunteer Coaches, UMBT is excited for the future of field hockey in our community. Practices began in mid-August at the beautiful UMBT Community Park with all of our players together at one venue, spread out on 6 fields. Sunday afternoon games commenced on September 8th, which will continue until the end of October. We are fortunate to have our UMBT Field Hockey Alumni, who've moved up to play in middle & high school, come back & help officiate our home games. In addition to our practices & game days, we have the opportunity to participate in various high school & college level Youth Days. On Saturday, September 7th, almost 50 Youth attended the Bangor Area High School Field Hockey Youth Day. It was wonderful to see such strong young ladies from Kindergarten to 12th Grade, along with the coaching staff, come together to enjoy the sport of field hockey! (See the attached picture, Photographer-Kris Parks) Later this fall, we are eager to have UMBT Field Hockey players attend various Youth events at Stroudsburg High School, Moravian University, Lafayette College & East Stroudsburg University. Thank you to the UMBT Township Staff as well as the Park & Recreation Board for their support of our program! Respectfully Submitted by Emily Keggan, UMBT Field Hockey Director.

Custom Decorative CONCRETE

Pool Decks • Patios • Driveways • Walks

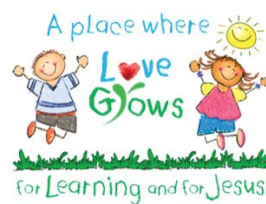
TODD CONSTANTINE

CDConcrete.net 908-892-4279



LITTLE FRIENDS PRESCHOOL

SERVING THE COMMUNITY SINCE 1990



**SPACE IS STILL
AVAILABLE FOR THE
2024-25 SCHOOL YEAR**

Visit us at
www.mountbethelchurch.org
or call (570) 897-7142.

3 Year Old Class
Meets Tuesday & Thursday
from 9 AM to 11:30 AM

4 Year Old Class
Meets Monday, Wednesday
& Friday from 9 AM to 12 PM



**We are a ministry of the
Mount Bethel Church**

Visit us online at www.mountbethelchurch.org for more information about Little Friends Preschool and the numerous other ministries we provide for children, teenagers, and adults of all ages!

Upper Mount Bethel Township Community Identity

Upper Mount Bethel Township history and culture from our municipal founding in 1754 and the infrastructure capabilities available for more urban economic development should coexist to manage a healthy, viable community into the future.

Upper Mount Bethel Township has three advisory committees to the Board of Supervisors that meet monthly to discuss aspects of community planning: EAC (Environmental Advisory Council, 2000), OSAB (Open Space Advisory Board, 2009) and EDC (Economic Development Committee 2011).

Our community was built on farming, resource extraction and small services businesses in a very large land area with seven village centers. The geology of glacial till, shallow depth to bedrock and steep slopes created a multitude of natural entities that also challenged some development.

Two thirds of our land area is considered character defining in the Comprehensive Slate Belt Multi-municipal Plan. (Google Plan Slate Belt). Few places have so many natural assets that could give us a sense of place and identity if we worked together to plan some types of employment that don't distract or diminish these things.

Many people have chosen to live here for those natural and recreational amenities, with a quiet lifestyle. The naïve hope is that the ever increasing pace of development, industrial or residential, does not overtake us for lack of planning foresight.

In order to participate in the vision for our future, we must stay informed and respect all views as having some merit. The challenge will be to come to a majority goal and work together to achieve and maintain that rural place we think we have.

The EAC goals are information and environmental education, as evidenced in the article by member Dohl DiFebo on cover crop seeding by small aircraft. EAC is exploring adding more to our Township webpage over time.

In the meantime, listen to recordings of Township meetings if you can't attend and look for several sources on important life changing decisions.

Judy Henckel, EAC



Hardball Cider

805 Orchard Rd.

Mt. Bethel, PA 18343

As classic as our favorite sport, with an innovative spin on the word craft, Hardball Cider, Wine, and Orchard is dedicated to tradition and quality. We press apples right here on our 5th generation-owned family farm, with local food trucks and live music.

**Visit our website to learn more:
www.hardballcider.com**

Parks and Recreation

An update from the Upper Mount Bethel Township Parks & Recreation Board...

UMBT Parks & Recreation

Fall/Winter 2024

SAVE THE DATES

*6/14/25 Movie Night In The Park
7/4/25 July 4th Fireworks
8/23/25 Food Truck Festival / Craft Show
11/8/25 Veteran's Day Fireworks*

We want to recognize and give thanks to **Township Manager Nick Graziano** for his continued support of Parks & Recreation. On behalf of our community, our residents and the Parks & Recreation Board.

THANK YOU!

We want to recognize and give thanks to **LAMTEC** and **Custom Laminating** for their continued support of Parks & Recreation. On behalf of our community, our residents and the Parks & Recreation Board.

THANK YOU!

Volunteers Needed

We are always looking for volunteers to assist us with programs and events. If you are interested in becoming a volunteer, please email us at ParksRec@umbt.org.

Parks & Recreation Board

We are excited to announce that the Community Park bathrooms project are completed. We are now working towards adding two Softballs Fields.

Sports Programs

UMBT Basketball
UMBT Softball
UMBT Field Hockey
UMBT Volleyball





POLARIS®

can-am

Cub Cadet

SCAG

Husqvarna

ski-doo

Kawasaki

HOURS

Tues.-Fri. 9-5

Sat. 9-1

Closed Sun & Mon.

hhoutdoorps.com

1169 MOUNT BETHEL HIGHWAY
MOUNT BETHEL, PA 18343

610-588-6614



350 Mt Pleasant Rd.

Bangor, PA 18013

www.village-vet.com

email: info@village-vet.com



CYCLEMASTERS

The Slate Belt's Bike Shop

Bicycle Sales/Service & Accessories

Phone: 610-881-4258

Email: cyclemasters@rcn.com

Hours: Tues-Fri 11-6, Sat 9-4

15 N Broadway
Wind Gap PA, 18091



BUDGET
BLINDS

Style and service for every budget.*

Budget Blinds of Easton
484.546.4400
BudgetBlinds.com/easton-pa

FREE In-Home Consultation
AND 20% OFF!*

©2024 Budget Blinds, LLC. All Rights Reserved. Budget Blinds is a trademark of Budget Blinds, LLC and a Home Franchise Concepts Brand. Each franchise independently owned and operated. *Excludes Lutron.



KARASEK LAW OFFICES, LLC

FULL SERVICE FOR ALL NEEDS



641 MARKET STREET

BANGOR, PA 18013

TELEPHONE: 610-588-0224

FACSIMILE: 610-588-2088

EMAIL: RON@KARASEKLAWOFFICES.COM

RONOLD J. KARASEK, ESQ.

FORTY-EIGHT YEARS OF LEGAL EXPERIENCE!

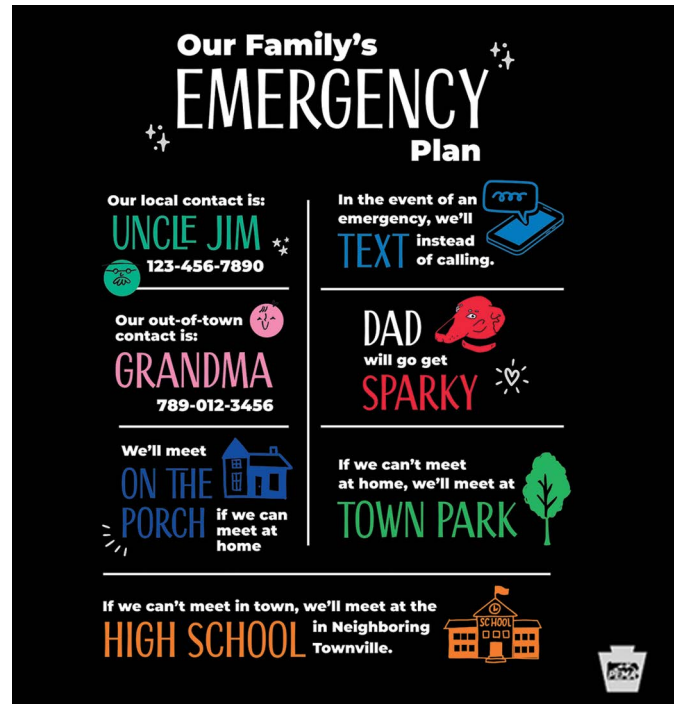
12 Simple Steps to Get Ready for Emergencies in PA

The Pennsylvania Emergency Management Agency is encouraging residents to prepare for emergencies and provided the following tips that township officials can share with their residents:

Preparing for emergencies doesn't have to be overwhelming. Here are 12 simple steps you can take to ensure that you and your family are ready for whatever comes your way:

- Make a Plan:** Create an emergency plan for your family, including communication methods and meeting spots.
- Build a Kit:** Assemble a supply kit with essentials like water, food, and first aid.
- Stay Informed:** Sign up for local alerts and make sure your phone can receive emergency notifications.
- Prepare for Evacuations:** Know your evacuation routes and where you can go, including plans for pets.
- Secure Important Documents:** Keep important documents safe and consider making digital copies.
- Check Your Insurance:** Review your insurance policies to make sure you're covered for disasters.
- Strengthen Your Home:** Take steps to protect your home, like securing heavy furniture and reinforcing doors.
- Plan for Family Needs:** Consider special needs for children, older adults, and family members with disabilities.
- Prepare for Power Outages:** Have backup power sources for medical devices and know how to keep medications safe.
- Educate Your Family:** Make sure everyone in your household knows the emergency plan and how to use the supplies.
- Get Involved in Your Community:** Join or start a local preparedness group to help your community be ready.
- Practice Your Plan:** Regularly review and practice your emergency plan so everyone knows what to do.

A social media graphic showing what, in general, to discuss with your family or housemates before an emergency happens.



For more details and additional resources, www.pa.gov/en/agencies/ready/get-prepared.html. Taking these small steps now can make a big difference in keeping your family safe!

2024 UMBT TAX OFFICE HOURS

TAX OFFICE: 387 YE OLDE HWY #73 MT BETHEL PA 18343

1st, 3rd, 4th, THURSDAYS OF THE MONTH 4PM-6PM

2ND MONDAY OF THE MONTH 4PM-6PM

2ND SATURDAY OF THE MONTH 9AM-NOON

ADDITIONAL HOURS YEAR END:

4PM – 6PM 12/27, 12/30, 12/31

12/31/2024-LAST DAY FOR 2024 REAL ESTATE TAXES

OFFICE CLOSED: 11/11, 11/27, 11/28, 11/29, 12/19-12/26

JUNE, JULY, AUGUST-BY APPOINTMENT ONLY, PLEASE CALL TO SCHEDULE

There is a payment box attached to the office building if you choose to drop off your payment outside of sitting hours.

CINDY BECK

TAX COLLECTOR-484/404-9491, EMAIL:cindybecktaxcollector@gmail.com



Are you Ready^{PA}?

ACTION SHEET

8

things to keep in your car during winter



WHAT TO DO IF YOU GET STRANDED IN YOUR VEHICLE...

STAY IN YOUR VEHICLE WHERE RESCUERS ARE MOST LIKELY TO FIND YOU.

RUN THE HEAT 10 MIN AN HOUR TO SAVE BATTERY POWER.

KEEP SNOW CLEAR FROM THE EXHAUST PIPE TO PREVENT CARBON MONOXIDE POISONING.



Placing a Yellow Dot decal in your vehicle's rear window alerts first responders to check your glove compartment for vital information to ensure you receive proper medical attention. For more information, visit: www.penndot.gov/TravelInPA/Pages/Yellow-Dot.aspx

THE BEST WAY TO KNOW ABOUT ROAD CONDITIONS...

511PA has a mobile application you can use for active PennDOT and PA. Turnpike advisories. Customize your alerts by type, distance and frequency based on your location. Best of all, you don't need to touch or read your phone - just listen for the travel alerts while you focus on driving.

Visit <http://www.511pa.com/mobileApp.aspx>



Download the
FREE 511PA
Smartphone app!



Upper Mount Bethel Township Contact Information

MUNICIPAL BUILDING

387 YE OLDE HIGHWAY • P.O. BOX 520 • MOUNT BETHEL, PA 18343 • 570-897-6127 • FAX 570-897-0108

OFFICE HOURS:

Upper Mount Bethel Township Office Hours: Monday-Friday, 7:00 a.m. – 4:00 p.m.

UPPER MOUNT BETHEL TOWNSHIP MEETINGS - 2024

All meetings are held in the Municipal Building, 387 Ye Olde Highway, Mt. Bethel, PA 18343

Board of Supervisors - 2nd and 4th Monday at 7:00 p.m.

Planning Commission - 3rd Wednesday at 7:00 p.m.

Economic Development Committee - 4th Thursday at 7:00 pm

Environmental Advisory Council - 1st Wednesday at 7:00 pm

Open Space Advisory Board - 4th Wednesday at 7:00 p.m.

Recreation/Park Committee - 2nd Thursday at 7:00 p.m.

Zoning Hearing Board - 4th Tuesday at 7:00 p.m. (as needed)

Board of Elected Supervisors	6 year term	Term Exp
John Bermingham	Chairman	January 2028
David Friedman	Vice Chairman	January 2028
Jason Albert	Treasurer	January 2030
Courtney Eckman	Secretary	January 2030
Jonathan Erler	Supervisor	January 2026

Township Manager Nick Graziano	Ext. 5	Annual
--	--------	--------

Township Secretary/Recording/Secretary Cynthia Beck	Ext. 2	
---	--------	--

Senior Accounting Clerk/Bookkeeper Diann Eden	Ext. 4	
---	--------	--

Administrative/Office Liaison David Friedman		
--	--	--

Road Department Inquires

Road Crew Chief/EMC	Lindsey Manzi, Ext. 6
Assistant Road Crew Chief	David Constable, Ext. 6
Road Dept. Liaison	David Friedman

Zoning Officer/Building Codes Official	Tina Serfass	Ext. 3	Annual
---	--------------	--------	--------

Property Maintenance Officer	Open	Ext. 3	
-------------------------------------	------	--------	--

Burn Control	John Bocko	570-688-6191	
---------------------	------------	--------------	--

Sewage Enforcement Officer Scott Policelli		Annual
--	--	--------

Township Engineer Justin Coyle, P.E.		Annual
--	--	--------

Board of Supervisors & Planning Commission Solicitor Ronold Karasek, Esq.		Annual
---	--	--------

Zoning Hearing Board Solicitor Chad DiFelice		Annual
--	--	--------

Zoning Hearing Board		5 Yr Term
Russell Horn	Chairman	January 2028
Jeff Manzi	Vice Chairman	January 2025
Lee McDonald	Secretary	January 2028
Scott Duddy	Member	January 2027
Tony Rago	Member	January 2029

Planning Commission		5 Yr Term
Robert Teel	Chairman	January 2028
Randy Crane	Vice Chairman	January 2027
Faith Sarisky	Secretary	January 2026
Frank Klein		January 2025
Jimmy Potter		January 2025

Tax Collector Cindy Beck	484-404-9491	January 2026
---------------------------------	--------------	--------------

Vacancy Board Mark Mezger		Annual
----------------------------------	--	--------

Elected Auditors	6 year term	Term Exp
Charles Felker	Chairman	January 2028
Rod Rufe	Secretary	January 2026
Charles Baltic	Vice Chairman	January 2030

BASD Regional Economic Development Authority Jeff Manzi		January 2026
---	--	--------------

STATE POLICE		
Emergency: 911	Non-Emergency: 610-759-6106	

Mt. Bethel Vol. Fire Co.		
Emergency: 911		
Non-Emergency/Report Controlled Burns	570-897-6767	

North Bangor Fire Co.		
Emergency: 911	Non-Emergency: 610-588-0614	

PennDot County Roads	Deer Removal	610-250-1840
-----------------------------	--------------	--------------

Game Commission Twp Roads	Deer Removal	610-926-3136
----------------------------------	--------------	--------------

Mt. Bethel Post Office		570-897-5131
-------------------------------	--	--------------

Bangor Area School District	Main Number	610-588-2163
------------------------------------	-------------	--------------

Slater Family Network		610-599-7019
------------------------------	--	--------------

Garbage Company Waste Management		800-633-9096
--	--	--------------

Met-Ed	Customer Service	1-800-545-7741
---------------	------------------	----------------

Frontier	Customer Service	1-800-447-3140
-----------------	------------------	----------------



The Science of Winter Road Treatments



pennsylvania
DEPARTMENT OF TRANSPORTATION

Winter road treatment tactics depend on **temperature, precipitation type** and **traffic volume**.
Salt isn't a silver bullet and may not be effective on every roadway.

The Basics

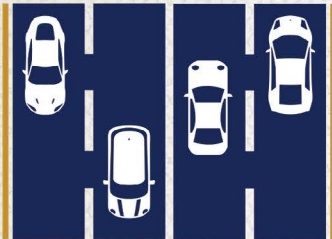


Less effective below 23-25 degrees

Most effective when crushed/spread by traffic

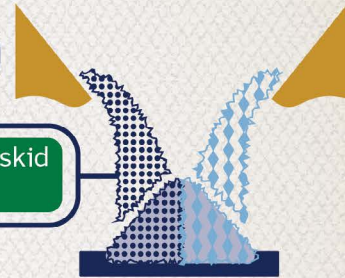


Salt Use and Road Types



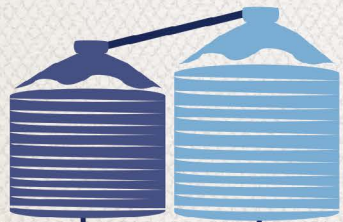
Most effective with more traffic

Mixed with anti-skid or only anti-skid used on lower-traffic roads

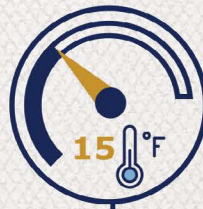


When traffic is too low for salt to be effective, salt or salt/anti-skid mix is focused on hills, intersections sharp curves or freezing-prone areas

Salt and Temperature



Pre-wetting salt with salt brine can jump start melting, but is still most effective when pavement is 25 degrees or higher



On high-traffic roads, salt/anti-skid mix can be used when the road temperature is below 15 degrees



On low-traffic roads when the road temperature is below 15 degrees, falling snow is generally dryer and blows over the roadway, so salt is generally not used

World-Class Emergency Care on Hecktown Road



No matter your medical emergency, there's a state-of-the-art hospital in your neighborhood that can handle it all – from a broken arm to stroke and everything in between.

Kid-specific space | Level IV Trauma Center | Acute Stroke Ready
Chest Pain Center | Intensive care unit

LVHN.org/hecktownoaks
3780 Hecktown Road, Easton



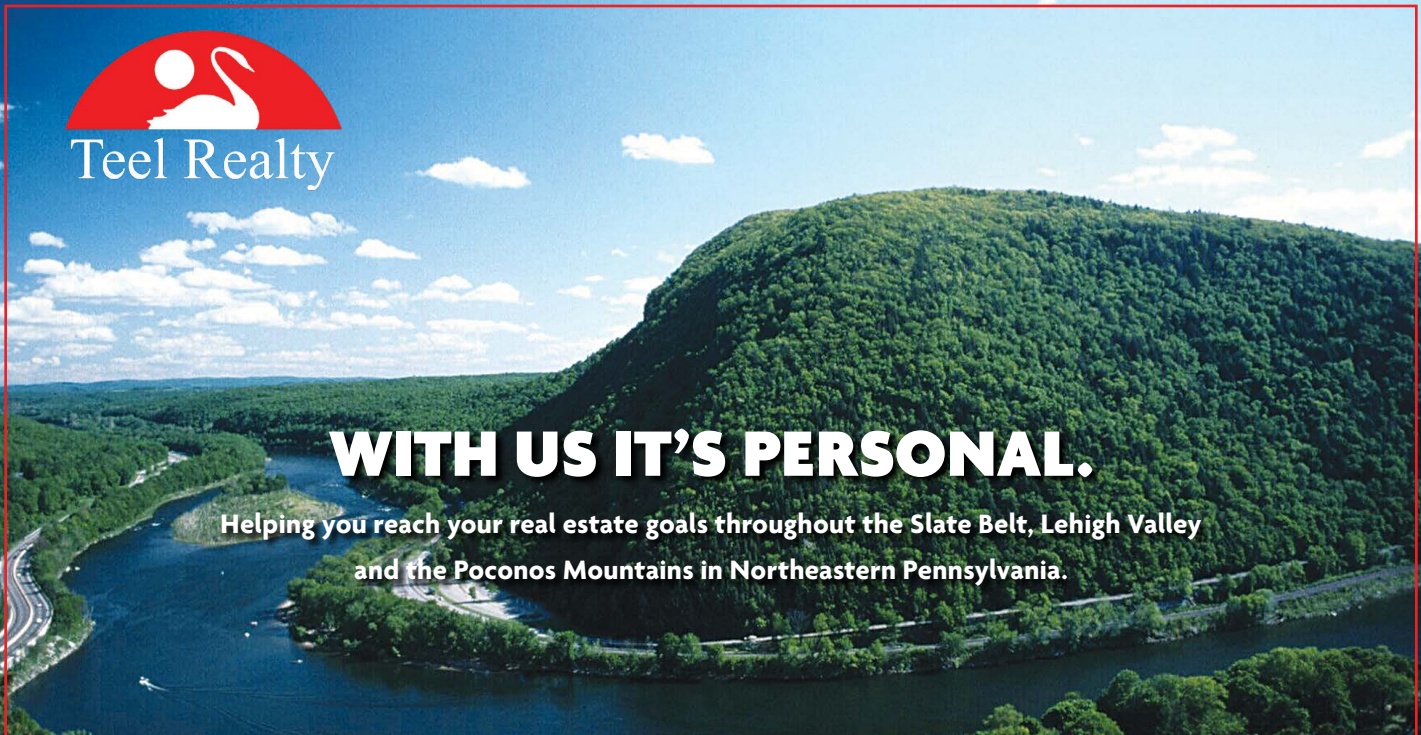
Upper Mount Bethel Township

387 Ye Olde Highway
P.O. Box 520
Mount Bethel, PA 18343

PRSRT STD
U.S. POSTAGE
PAID
HARRISBURG, PA
PERMIT NO. 609



Fall/Winter 2024-25



WITH US IT'S PERSONAL.

Helping you reach your real estate goals throughout the Slate Belt, Lehigh Valley
and the Poconos Mountains in Northeastern Pennsylvania.

TERRY TEEL—BROKER / OWNER
Cell: 570-460-3910 • Email: TerryTeel8@gmail.com

2418 N. Delaware Drive • Mount Bethel PA 18343
Office: 1-570-897-7325 • Fax: 1-570-897-7303



Buyers



Sellers



Tenants and Landlords



This Community Newsletter is produced for Upper Mount Bethel Township
by Hometown Press 215.257.1500 • All rights reserved*

To Place An Ad Call Philip Solomon at Hometown Press • 215-431-4184

